



2009-2010 GMT Quarterly Report for District (or Undistricted) **District 24 A**

GMT: **STEVEN D SHERER**

Location: **VIRGINIA**

GMT CA: **1**

CLUBS

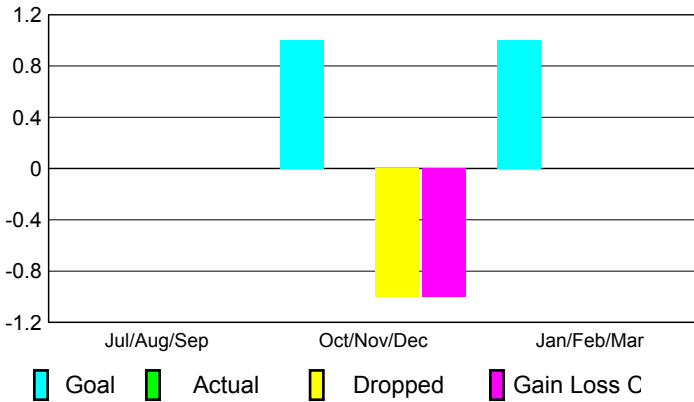
| Club Results |
|--------------|
| 2009-2010 |

| Clubs |
|-----------|
| 2008-2009 |

| Month | New Club Goal | Actual New Clubs | Actual Dropped Clubs | Gain/Loss of Clubs | Gain/Loss of Clubs |
|---------------|---------------|------------------|----------------------|--------------------|--------------------|
| Jul/Aug/Sep | 0 | 0 | 0 | 0 | 0 |
| Oct/Nov/Dec | 1 | 0 | -1 | -1 | 0 |
| Jan/Feb/Mar | 1 | 0 | 0 | 0 | 0 |
| Totals | 2 | 0 | -1 | -1 | 0 |

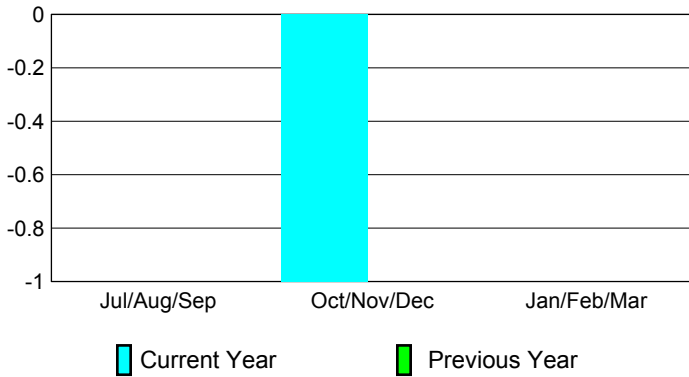
Club Results 2009-2010

Goal, New, Dropped, Gain/Loss



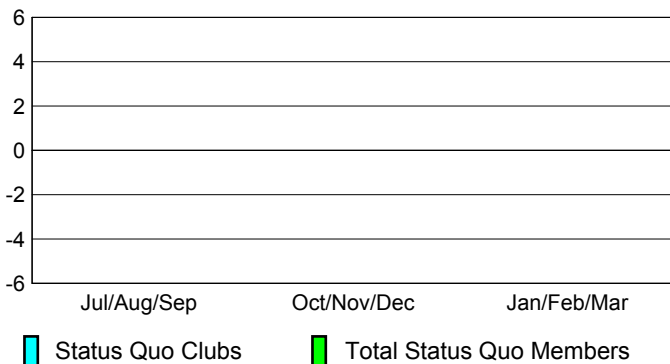
Comparison of Club Gain/Loss

Current Year Compared to the Previous Year



YTD Status Quo Clubs 2009-2010

Status Quo Clubs Compared to Status Quo Members



MEMBERSHIP

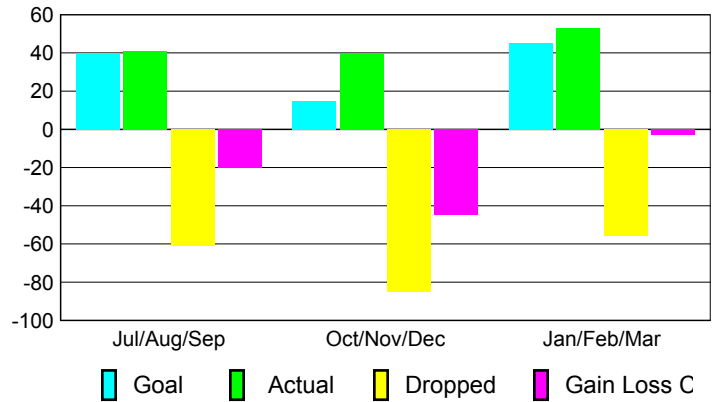
| Membership Results |
|--------------------|
| 2009-2010 |

| Membership |
|------------|
| 2008-2009 |

| Month | Net Memb Goal | Actual New Memb | Actual Dropped Memb | Gain/Loss of Memb | Gain/Loss of Memb |
|---------------|---------------|-----------------|---------------------|-------------------|-------------------|
| Jul/Aug/Sep | 40 | 41 | -61 | -20 | -30 |
| Oct/Nov/Dec | 15 | 40 | -85 | -45 | -1 |
| Jan/Feb/Mar | 45 | 53 | -56 | -3 | -9 |
| Totals | 100 | 134 | -202 | -68 | -40 |

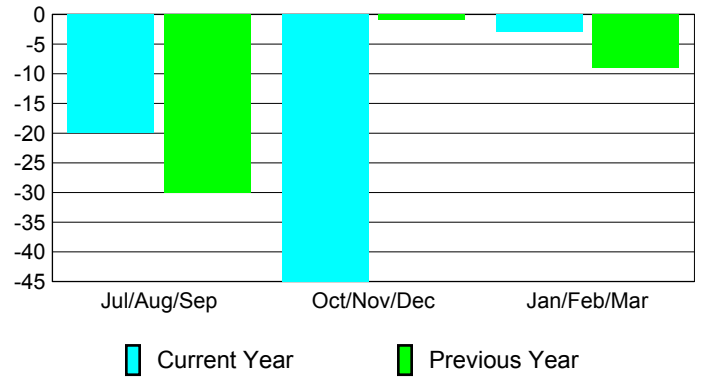
Membership Results 2009-2010

Goal, New, Dropped, Gain/Loss

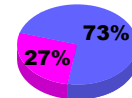


Comparison of Membership Gain/Loss

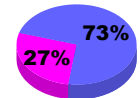
Current Year Compared to the Previous Year



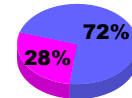
Gender Comparison 2009-2010



Jul/Aug/Sep



Oct/Nov/Dec



Jan/Feb/Mar

Male

Female